

Key Investor Document

This document provides you with key investor information about QPT Watch Fund 02. It is not marketing material. The information is to help you to understand the nature and the risk of this class. You are advised to read it so you can make an informed decision about whether to invest

QPT Watch Fund 02

An investment fund entitled QPT Watch Fund 02. The fund is managed by QPT Watches Ltd

Objectives and Investment Policy

The objective of this investment is to obtain a return which equals or outperforms returns in equity markets while observing the fund's risk limits.

The fund invests in luxury wristwatches (Rolex only). The fund will invest in watches deemed collectable, blue-chip watches and undervalued watches. Investments are diversified across different countries.

The funds transaction costs may have a material impact on returns. Transaction costs are not part of the funds ongoing charges which have been mentioned in the "Charges" section.

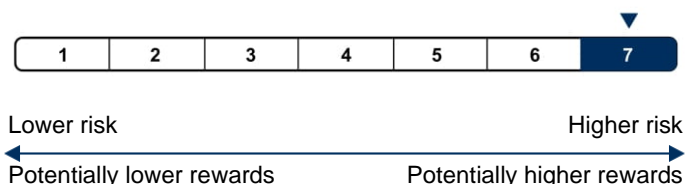
The fund invests in watches and these investments involve a foreign exchange risk. The fund may apply different types of financial agreements (forward contracts) to mitigate the risk.

The Funds investments are subject to ongoing management and risk diversification. In the attempt to fulfil the objective of the fund, the fund investments will typically deviate from past performance and industry levels. As a result your return may be higher as well as lower than developments in the past performance of the fund. You can assess your return by comparing with the fund's previous history.

The fund accumulates returns and does not distribute dividends. The return derives when the term period has ended (36months).

Recommendation: This class may not be appropriate for investors who plan to withdraw their money within three years.

Risk and Reward Profile



The risk scale shows the risk of your investments. Risk category 1 is not a risk-free investment. The class position on the risk scale is determined by fluctuations in the return of the class and/or representative data over the past three years. The fund's position on the risk scale is not permanent and may shift over time.

The categorisation is calculated on the basis of historical data, which is not a reliable indication of the fund's future risk profile. The risk scale is solely a mathematical calculation and does not

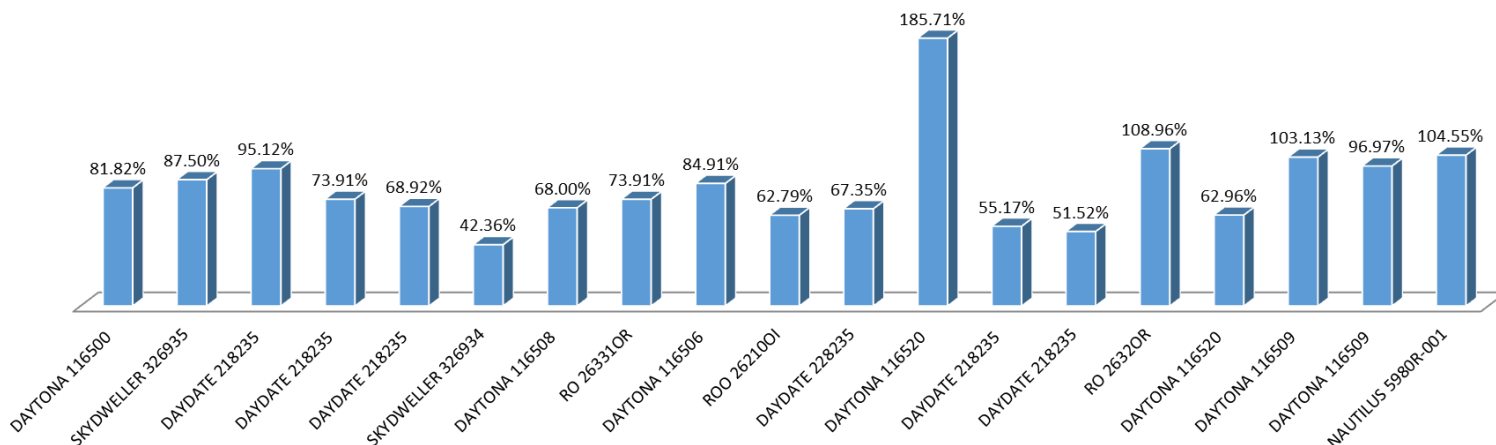
The entry and exit charges specified above are maximum rates. The charges cover the funds expenses in connection with increase/decrease in investors. In some cases you may pay less. Please contact your financial adviser for more details.

Charges taken from the fund over a year are based on the last year's expenses. Consequently the amount may vary from year to year. The charges you pay are used to pay the costs of the fund – including costs related to management, marketing and distribution. The charges will reduce your potential return.

Further information about the fund charges is available in the prospectus which can be downloaded from the QPT Watch Fund website www.qptwatchfund.com.

Past Performance

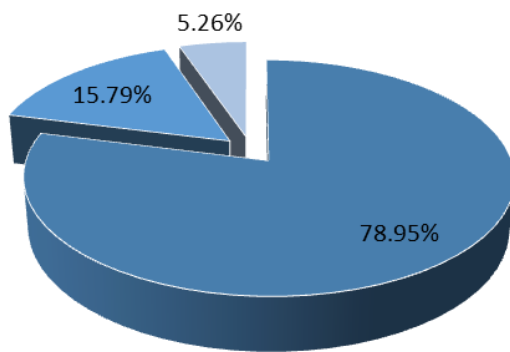
Percentage Gain Over 3 Years



(The bars show the annual returns of the funds individual watch purchases. The overall return of the watches is stated less costs and made up in \$ USD)

Past Performance – Brand Class Sectors

■ ROLEX ■ AUDEMARS PIGUET ■ PATEK PHILIPPE



The fund was established on 21 January 2018 entitled QPT Watch Fund. QPT Watch Fund invested in luxury watches.

Past performance is no guarantee of future performance.

Charges

One-off charges taken before or after you invest:	
Entry charge	0 % (Usually 2,50)
Exit charge	0 % (Usually 0,00)
This is the maximum that might be taken out of your money before it is invested or before the proceeds of your investment are paid out respectively.	
Charges taken from the class over a year:	
Ongoing charge	2,00 %
Charges taken from the class under certain specific conditions:	
Performance fee	Yes

The entry and exit charges specified above are maximum rates. The charges cover the funds expenses in connection with increase/decrease in investors. In some cases you may pay less. Please contact your financial adviser for more details.

Charges taken from the fund over a year are based on the last year's expenses. Consequently the amount may vary from year to year. The charges you pay are used to pay the costs of the fund – including costs related to management, marketing and distribution. The charges will reduce your potential return.

Further information about the fund charges is available in the prospectus which can be downloaded from the QPT Watch Funds website www.qptwatchfund.com.

Practical Information

The fund is part of QPT Watches Ltd and in accordance with legislation it is liable for its own obligations only. Consequently, your investments will not be affected by developments in other funds or other future funds.

Further information, including more detailed information on the investment policy and risk profile of the fund, appears from the prospectus which is available free of charge at QPT Watch Funds website www.qptwatchfund.com. The material is available in English.

The investments are not traded on an exchange (regulated market) and therefore you must contact either your broker/advisor if you wish to purchase or sell investments in the fund. Restrictions may apply also. Please see the prospectus for more information.

You may not freely exchange your holdings in particular funds for holdings from other funds or funds within QPT Watch Fund.

Tax legislation in your home country may influence your personal tax position.

The material has been prepared by QPT Watches Limited (managing QPT Watch Fund 02) and is not and may not be construed to be an invitation to invest in watch opportunities. Before you invest, please read the most recent prospectus and Key Investor Information which are available free of charge at qptwatchfund.com. Past performance is no guarantee of future performance and de facto realised returns may deviate from expectations. Please note that returns and price developments may fluctuate.

This fund is not authorised or regulated by any financial regulation. Offerings should only be marketed towards sophisticated and high net worth investors only. For more information regarding relevant risks download the prospectus document from www.qptwatchfund.com

QPT Watches Ltd is a company registered in the Seychelles. This key investor information is accurate as at 31 July 2025.